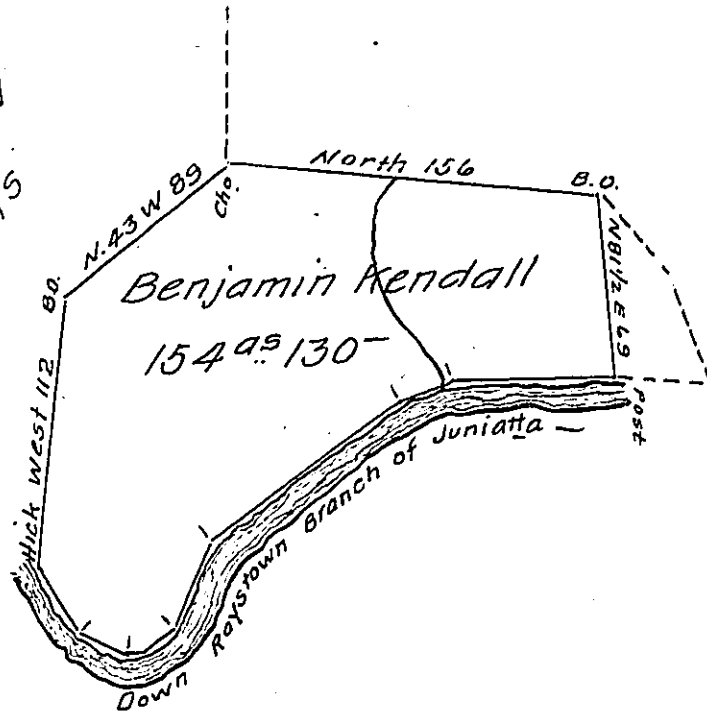


*John Foshe now
Joseph Norris*



*Courses & distance
up the Branch*

- S. 9. E. 70*
- S. 21. E. 20*
- S. 43. E. 100*
- S. 73. E. 40*
- S. 40. E. 15*
- S. 16. E. 12*
- S. 29. W. 20*
- S. 53. W. 30*

Situate on the North Side of the Raystown Branch of Juniatta - In Hopewell Township Huntingdon County. Containing One Hundred and fifty four acres and one Hundred and thirty perches and allowance of six per Cent - Surveyed for Benjamin Kendall on order No 275 dated the 1st August 1766.

To Jacob Spangler Esq. S.G.

Daniel Africa D.S.

The dotted and black lines represent the draught of a tract of land surveyed for William Enyard on an improvement made by Solomon Foshee about forty years ago. This tract interferes one Hundred and fifty four acres and one Hundred and thirty perches with the Benjamin Kendall Survey. Solomon Foshee conveyed to Alexander Read who conveyed to William Enyard who devised the same to W^m Enyard the present owner.

IN TESTIMONY that the above is a copy of the original remaining on file in the Department of Internal Affairs of Pennsylvania, made conformably to an Act of Assembly approved the 16th day of February, 1833, I have hereunto set my Hand and caused the Seal of said Department to be affixed at Harrisburg, this twenty sixth day of June 1908.

Henry Horst
Secretary of Internal Affairs.